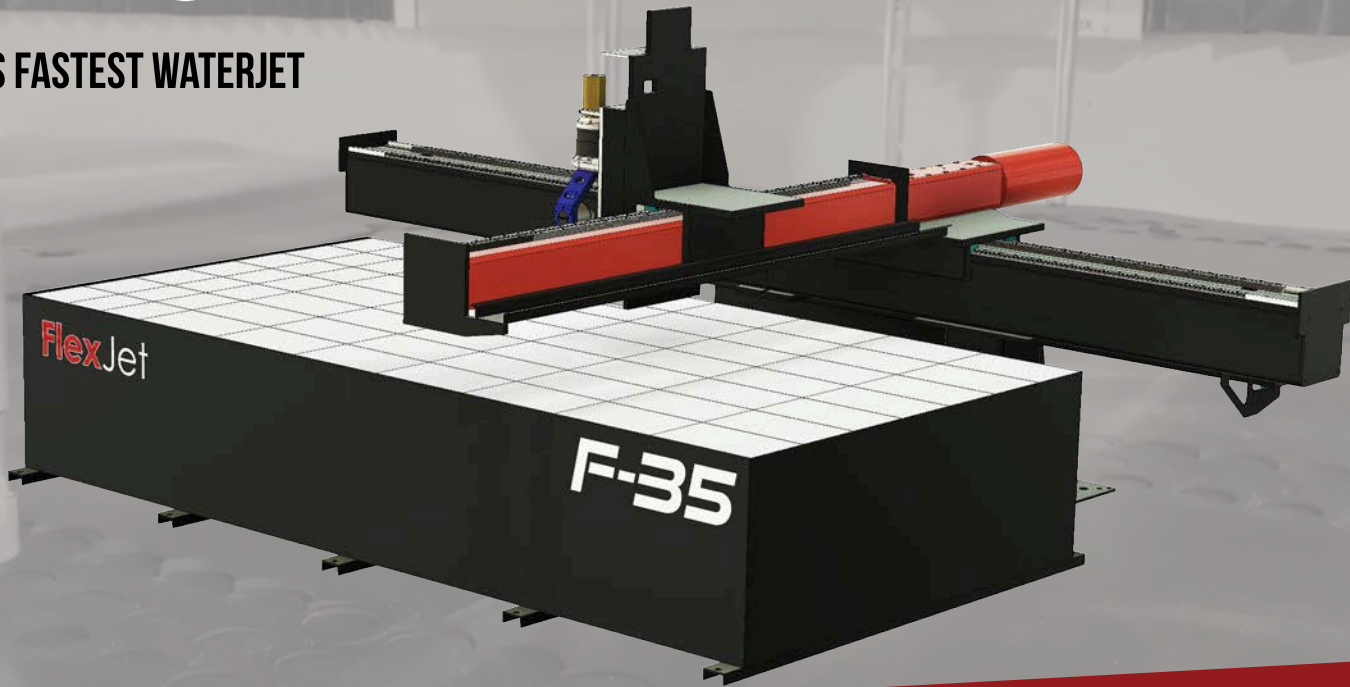


FlexJet

THE WORLD'S FASTEST WATERJET



FLEXJET:

The FlexJet is the world's fastest waterjet with the top speed, maximum acceleration, proven performance, and reliable service. FlexJet will cut virtually any shape in a single step with our dynamic 5-axis cutting head. FlexJet is the solution for fast and precise waterjet cutting in a broad range of materials.

Our unique, actual 5-axis design allows the FlexJet to set itself apart by achieving taperless cutting in challenging to reach areas and giving the flexibility to cut any angle. Our novel design makes programming more straightforward and allows the machine to cut faster.

FlexJet leads the way for faster manufacturing providing more throughput on your waterjet by using state-of-the-art technology and a team of experts. FlexJet creates high-performance waterjet machines so you can accomplish more.

SPEED

PERFORMANCE

SERVICE

FAST RAPIDS:

X – 1,800 IPM

Y – 1,800 IPM

Z – 1,000 IPM

1G – Acceleration / Deceleration

FASTER 5-AXIS:

B – $>120^\circ$

C – 360° (Infinite)

Patent pending design

FASTEST SOFTWARE:

- Cut up to 7 times faster
- Advanced look ahead
- Patent pending motion control
- Use any CAD/CAM software



F-10

XYZ: 120"/80"/12"

5 Axis Option

Jet 50HP / 60k PSI



F-15

XYZ: 180"/80"/12"

5 Axis Option

Jet 50HP / 60k PSI



F-25

XYZ: 300"/80"/12"

5 Axis Option

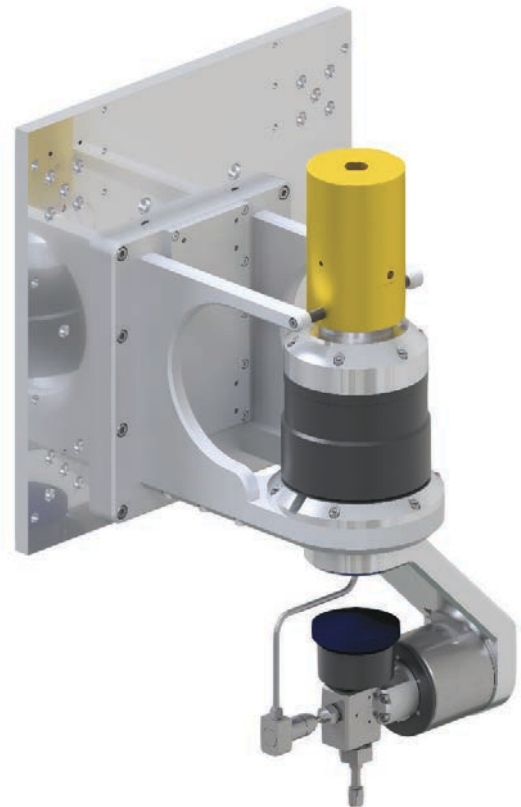
Jet 50HP / 60k PSI

5-AXIS FLEXIBILITY

- Achieve taperless cutting with the novel 5-axis head
- Utilize dynamic tangential following
- Accurately cut difficult to reach areas
- Cut any angle with no limits
- Use any length nozzle
- Easy to program
- Easy to post

SPECIAL FEATURES

- Customize XYZ travel
- Multiple cutting heads
- Auto head spacing
- Auto displacement
- Any length nozzle body
- Vision systems
- Dual gantry



Additional accessories include garnet removal, water recycling, water level control & more.

FlexMachineTools

705 Commerce Drive, Wapakoneta, OH 45895 | www.flexmachinetools.com | 1-800-837-2503