

# FlexMachineTools

## FlexCNC 4th Axis 250 (16")

### FlexCNC Rotary Table

NCT Rotary tables are designed with axial- radial bearings to provide excellent load and thrust capabilities. The hydraulic clamp produces a massive holding power and the housings withstand any twisting or flexing, the large center bore series provides for added flexibility when adding work holding devices.

◆ Suitable for Vertical and horizontal mounting



### GENERAL DETAILS

Table Diameter =  $\varnothing 400$  mm

Diameter of Pilot bore =  $\varnothing 60^{H7}$  mm

Diameter of through hole =  $\varnothing 51$  mm

Clamp operation Pressure = 35 kgf/  $\text{cm}^2$  (Hydraulic)

Minimum input increment -Rotary axis = 0.001°

Overall height with table top horizontal = 250 mm

Center height with table top vertical = 250 mm

Width of T-slots = 14  $^{H7}$  mm

Width of alignment key in mounting base = 18  $^{H7}$  mm

Ambient temperature = 18° ~ 40°C

### TECHNICAL DATA/ CAPACITIES

Permissible load - Vertical machining thrust = 2,000 kgf  
(With table clamped) - Torque = 180 kgf-m

- Tilting moment = 180 kgf-m

Indexing accuracy s = 15 sec

Repeatability = 4 sec

Allowable work inertia = 10.00 kg-m<sup>2</sup>

Loading capacity - Horizontal = 500 kg  
- Vertical = 200 kg

Rotation torque - Rotary axis = 170 kgf-m

Gear ratio - Rotary axis = 1: 180

Speed = 16.6 r.p.m (when motor 3000 r.p.m)

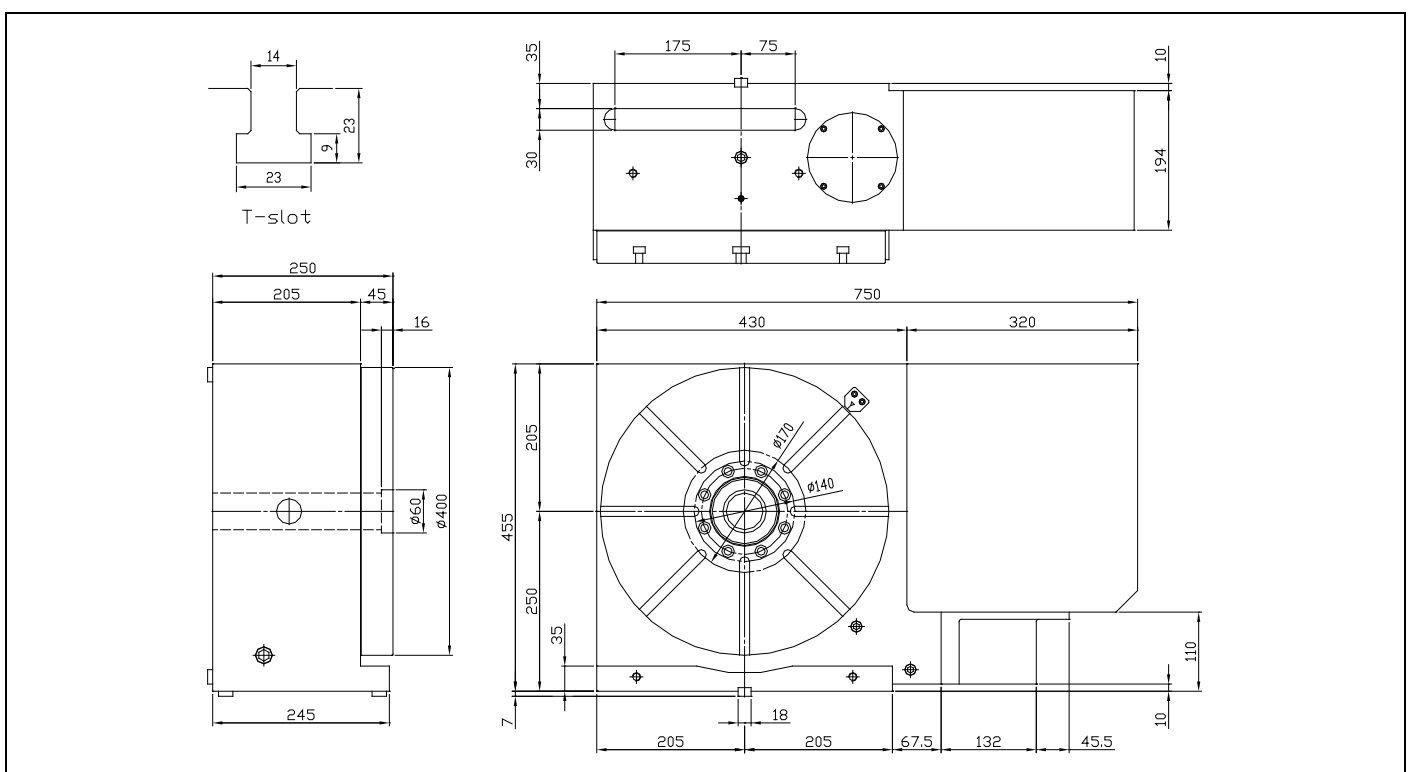
Net weight = 300 kg

### Optional

Suitable tailstock: MTS-B-250, ATS-B-250, BTS-320-250, BTS-400-250  
PHC for table clamping (If machine without hydraulic source)

3-Jaw chuck with sub plate = SK-12 (12")

AC individual controllers package available type DNS129A



\* We reserve the right to make changes without advance notice.