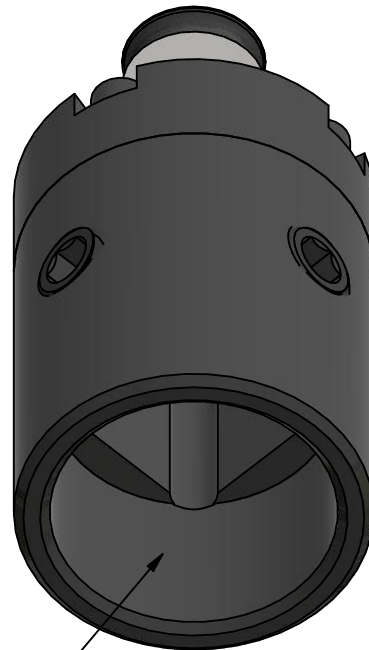


FITS FLEXARM SIZE 1
QUICK CHANGE CHUCK




RECEIVING END IS MADE TO FIT
THE SQUARE AND SHANK OF
THE LARGE TAP TO BE USED

SIZE 1 LARGE TAP FIXED HOLDERS ARE MADE TO ORDER AND ARE USED WHEN A TAP NEEDS TO BE USED IN A FLEXARM HAVING A SIZE 1 QUICK CHANGE CHUCK THAT IS LARGER THAN THE TOOLING AVAILABLE IN FLEXARM'S CATALOG.

THE SIZE 1 TOOLING IN FLEXARMS STANDARD CATALOG GOES UP TO 1 1/4" UNC THREAD & 1" NPT THREAD. HOWEVER FLEXARM'S WITH SIZE 1 QUICK CHANGE CHUCKS ARE SUITED FOR SOME APPLICATIONS REQUIREING LARGER TAPS THAN SIZE 1 TOOLING IS AVAILABLE FOR. EXAMPLES OF THESE INCLUDE:

- CHASING THREADS
 - COMMONLY AFTER A HEAT TREAT PROCESS
- TAPPING HOLES IN SOFT MATERIAL
 - BRASS, PLASTIC, ETC.

TO SATISFY THESE APPLICATIONS, LARGE TAP SIZE 1 FIXED HOLDERS ARE USED.

<i>Date:</i> 7/23/2020	<i>Tolerance:</i> .00.....±.010 DECIMAL: .000.....±.005 .0000.....±.0005	<i>Drawn By:</i> crieman	<i>Option No.:</i>
<i>Name:</i> SIZE 1 LARGE TAP FIXED HOLDERS			
<i>Material Specs:</i>			<i>Sheet:</i> 1 OF 1
		<i>Part No.:</i>	